

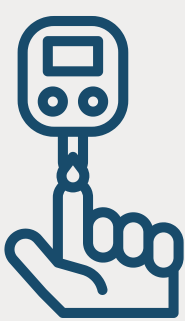
Ecuador Diabetes Emergency

Alma Kassim

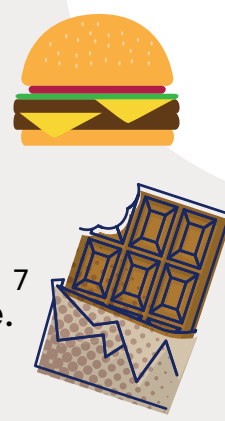
Type 1



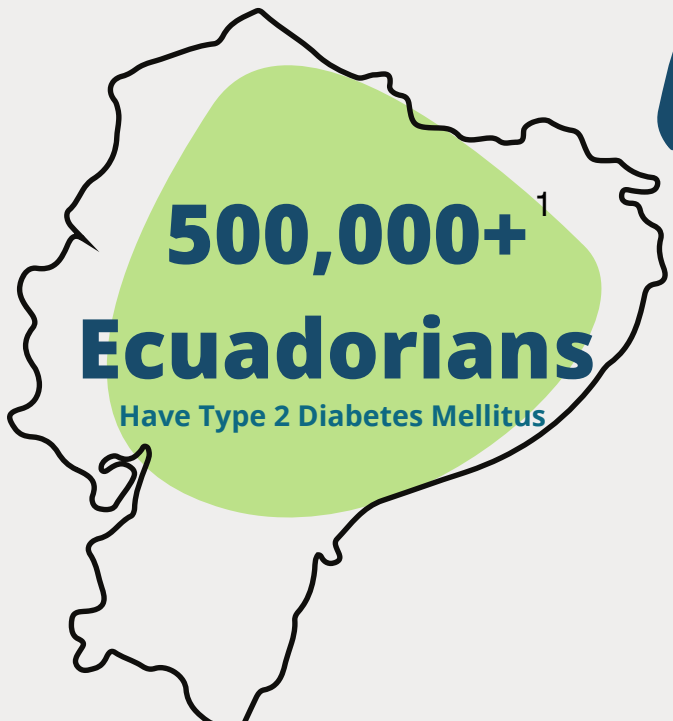
Type 1 diabetes is a hereditary condition that manifests very early in life.⁷



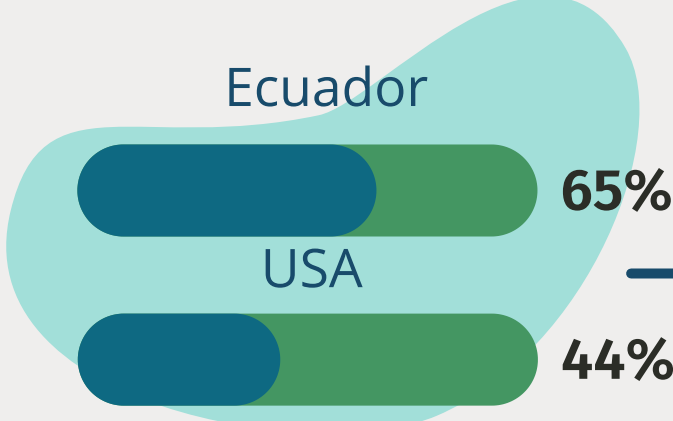
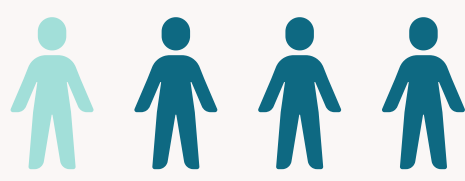
Type 2



Type 2 diabetes is mostly caused by a poor diet and progresses over time.⁷



Only 1 in 4 receive treatment¹

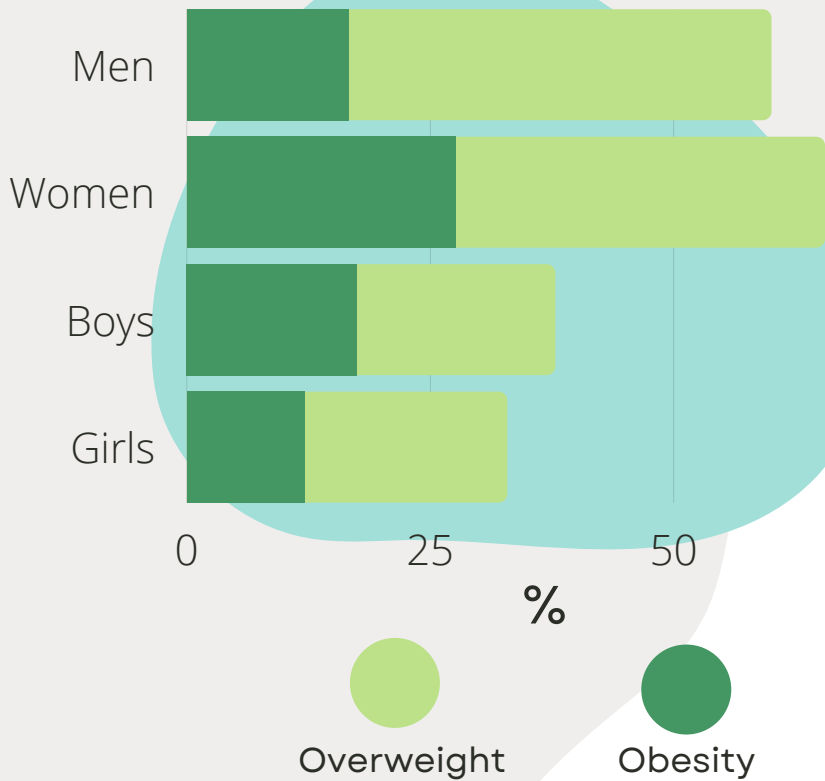


Diabetes-related Deaths in People under 60 yrs old⁴



Ecuador is lacking in medical specialists who work exclusively in diabetes.³

Obesity Prevalence²



Government Only Provides Short-Acting Insulin

If you wish to use long-lasting insulin, you'll have to pay out of pocket, which becomes pretty expensive.⁶

Resource Page

¹ *ClinMed International Library*. (n.d.). ClinMed International Library. Retrieved October 4, 2021, from <https://clinmedjournals.org/articles/ijdcr/ijdcr-2-034.php?jid=ijdcr#>

² *Ecuador*. (n.d.). World Obesity Federation Global Obesity Observatory. Retrieved October 4, 2021, from https://data.worldobesity.org/country/ecuador-59/#data_prevalence

³ *Ecuador - T1International*. (n.d.). T1International. Retrieved October 4, 2021, from <https://www.t1international.com/Ecuador/>

⁴ *Ecuador compare with United States of America*. (n.d.). International Diabetes Federation. Retrieved October 4, 2021, from <https://www.diabetesatlas.org/data/en/compare/60-211/idf-country-data-comparision.html>

⁵ *Ecuador diabetes report 2010 — 2045*. (n.d.). International Diabetes Federation. Retrieved October 4, 2021, from <https://www.diabetesatlas.org/data/en/country/60/ec.html>

⁶ *Types of Insulin*. (n.d.). HealthLink BC. Retrieved October 4, 2021, from <https://www.healthlinkbc.ca/health-topics/aa122570>

⁷ *What's the difference between type 1 and type 2 diabetes?* (n.d.). Life Line Screening. Retrieved October 4, 2021, from <https://www.lifelinescreening.com/health-education/diabetes/type-1-type-2-diabetes#:~:text=The%20main%20difference%20between%20the,producing%20cells%20in%20your%20pancreas.>